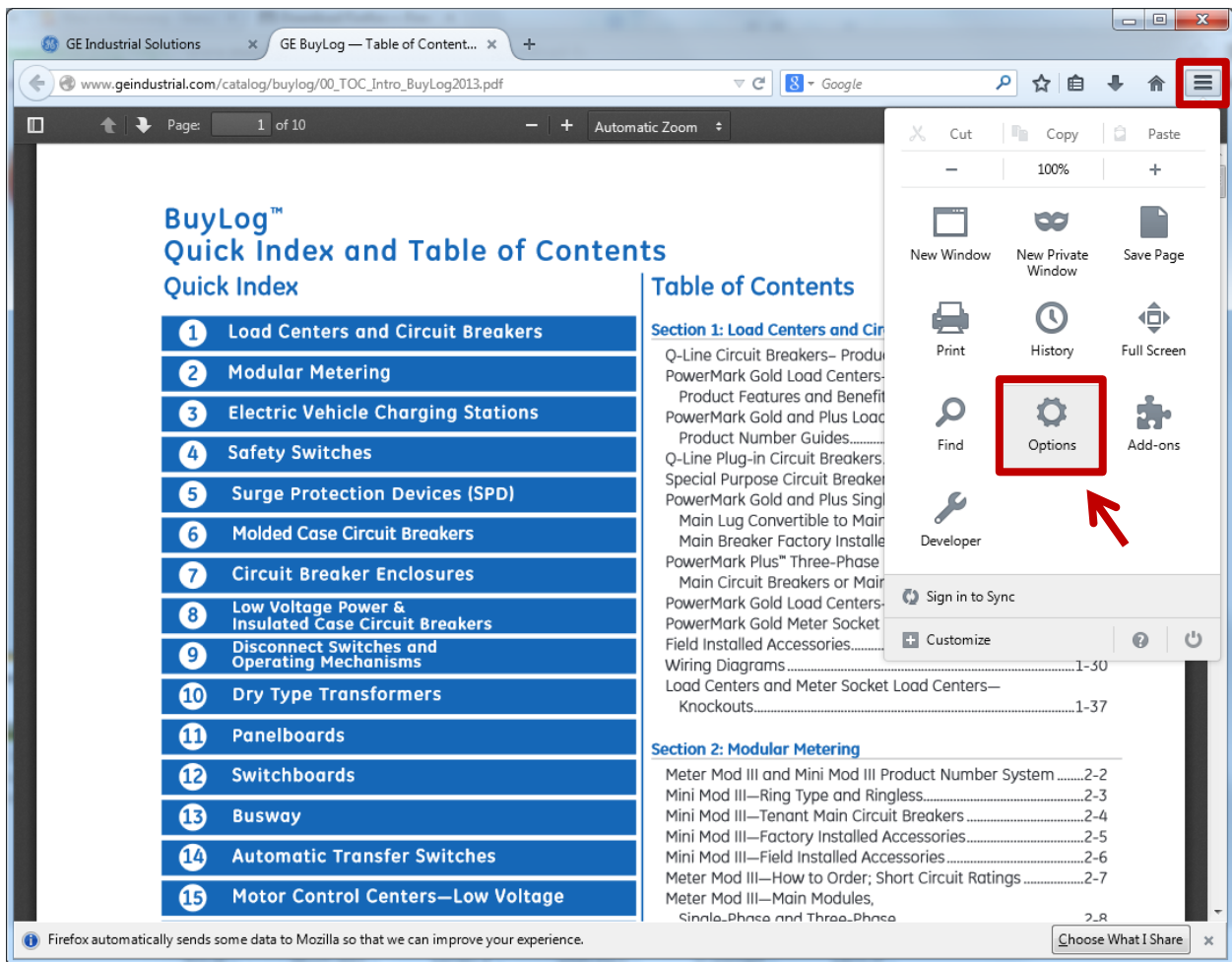




How to Fully Enable Adobe Acrobat Reader in Mozilla Firefox

Step 1:

Open your Firefox browser then navigate to the 'Open Menu' at the top right menu.



Step 2:

Click on the 'Option' button.

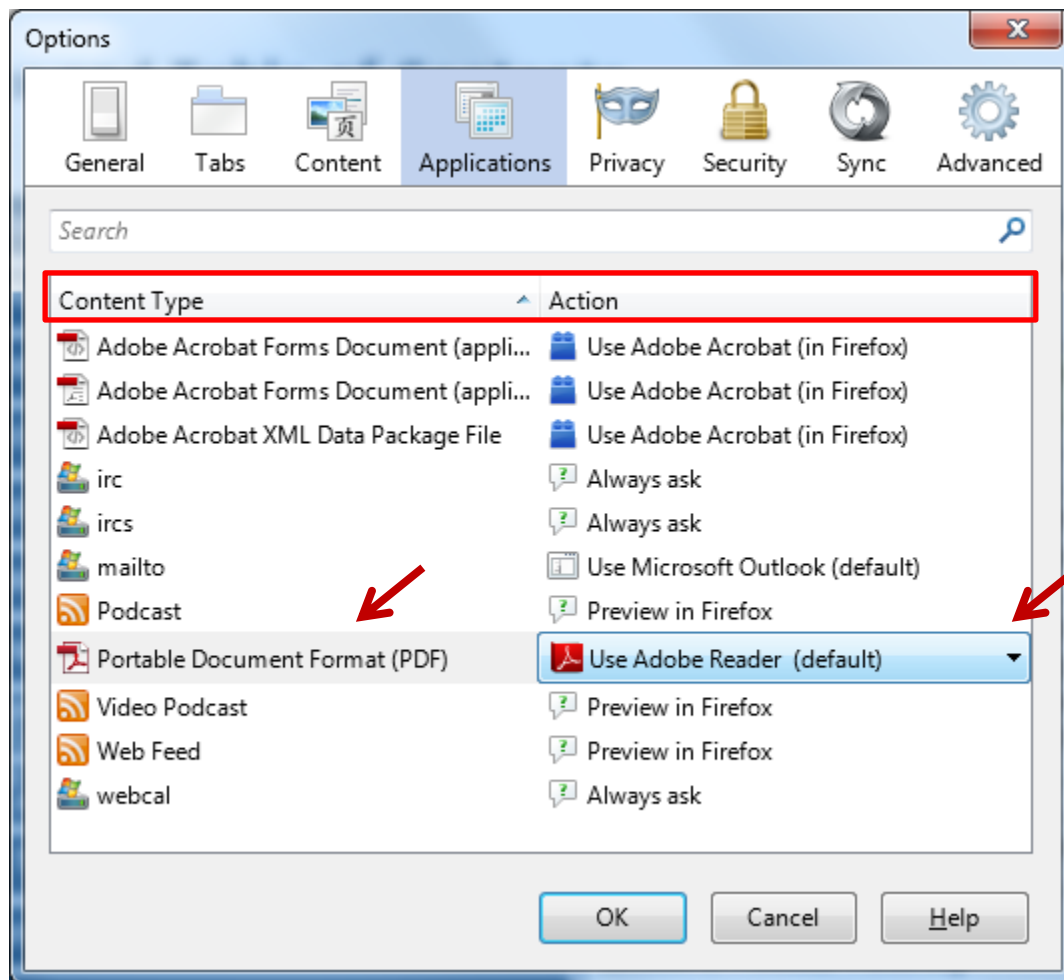
Step 3:

Locate the 'Portable Document Format' option under 'Content Type'.

Under 'Action' menu change

from 'Preview in Firefox'

to 'Use Adobe Reader (default)' in the drop down menu.



Step 4:

Open a new browser window in Firefox and enter the following URL.

http://www.geindustrial.com/catalog/buylog/00_TOC_Intro_BuyLog2013.pdf

The screenshot shows the Adobe Reader interface for the document "GE BuyLog — Table of Contents/Introduction". The top menu bar includes "File", "Edit", "View", "Window", and "Help". The toolbar contains various icons for file operations, navigation, and search. A sidebar on the left displays a "Bookmarks" list with the following items:

- GE BuyLog Table of Contents/Introduction
 - Quick Index 1
 - Table of Contents 1
 - Electrical Service Solutions for Industry 8
 - Parts Super Center 9
 - The GE Smart Catalog 10
 - Section 1: Load Centers and Circuit Breakers
 - Section 2: Modular Metering
 - Section 3: Electric Vehicle Charging Stations
 - Section 4: Safety Switches
 - Section 5: Surge Protection Devices (SPD)
 - Section 6: Molded Case Circuit Breakers
 - Section 7: Circuit Breaker Enclosures
 - Section 8: Low Voltage Power & Insulated Case Circuit Breakers
 - Section 9: Disconnect Switches and Operating Mechanisms

The main content area is titled "BuyLog™ Quick Index and Table of Contents Introduction" (Section Updated 06/2014). It features a "Quick Index" table with 29 numbered items and a "Table of Contents" table with detailed page numbers for each section and sub-section.

Quick Index	Table of Contents
1 Load Centers and Circuit Breakers	Section 1: Load Centers and Circuit Breakers
2 Modular Metering	Q-Line Circuit Breakers- Product Features and Benefits... 1-2
3 Electric Vehicle Charging Stations	PowerMark Gold Load Centers- Product Features and Benefits... 1-3
4 Safety Switches	PowerMark Gold and Plus Load Centers- Product Number Guides... 1-4
5 Surge Protection Devices (SPD)	Q-Line Plug-in Circuit Breakers... 1-5
6 Molded Case Circuit Breakers	Special Purpose Circuit Breakers... 1-6
7 Circuit Breaker Enclosures	PowerMark Gold and Plus Single-Phase Load Centers- Main Lug Convertible to Main Breaker... 1-9
8 Low Voltage Power & Insulated Case Circuit Breakers	Main Breaker Factory Installed... 1-12
9 Disconnect Switches and Operating Mechanisms	PowerMark Plus™ Three-Phase Load Centers- Main Circuit Breakers or Main Lugs Factory Installed... 1-14
10 Dry Type Transformers	PowerMark Gold Load Centers- Specialty Panels... 1-17
11 Panelboards	PowerMark Gold Meter Socket Load Centers... 1-18
12 Switchboards	Field Installed Accessories... 1-24
13 Busway	Wiring Diagrams... 1-30
14 Automatic Transfer Switches	Load Centers and Meter Socket Load Centers- Knockouts... 1-37
15 Motor Control Centers—Low Voltage	Section 2: Modular Metering
16 Switchgear — Low Voltage	Meter Mod III and Mini Mod III Product Number System... 2-2
17 Entellisys™ 5.0 Low-Voltage Switchgear	Mini Mod III—Ring Type and Ringless... 2-3
18 Medium Voltage Equipment	Mini Mod III—Tenant Main Circuit Breakers... 2-4
19 Paralleling Switchgear Critical Power Products	Mini Mod III—Factory Installed Accessories... 2-5
20 Uninterruptible Power Supplies	Mini Mod III—Field Installed Accessories... 2-6
21 Telecommunication Hardware	Meter Mod III—How to Order; Short Circuit Ratings... 2-7
22 Relays and Meters	Meter Mod III—Main Modules, Single-Phase and Three-Phase... 2-8
23 Meters and Instrument Transformers	Meter Mod III—Factory Installed Accessories... 2-9
24 Capacitors, Arresters and Harmonic Filters	Meter Mod III—Meter Stack Modules, Single-Phase Plus Accessories... 2-15
25 Distribution Transformers—Medium and High Voltage	Meter Mod III—Meter Stack Modules, Three-Phase plus Accessories... 2-18
26 DC Power Systems	Meter Mod III—Meter Stack Modules, Phase Balancing... 2-19
27 GE Publication Index	Mini Mod III—Enclosure Knockout Dimensions... 2-20
28 Time Current Curves and Outline Drawings	Meter Mod III—Enclosure Knockout Dimensions... 2-21
29 GE Product Index	Section 3: Electric Vehicle Charging Stations
	Introduction... 3-2
	WattStation™ and WattStation™ Connect Overview, Features and Benefits... 3-3
	WattStation™ EV Charger Specifications and Ordering Information... 3-4
	Networked WattStation™ Wall Mount EV Charger Specifications and Ordering Information... 3-5
	WattStation™ Connect Specifications and Ordering Information... 3-6
	WattStation™ Wall Mount Overview, Features and Benefits... 3-7
	Specifications and Ordering Information... 3-8
	DuraStation™ EV Charger Overview, RFID Option and Mounting Options... 3-9
	Features and Benefits, Specifications, Ordering Information... 3-10

At the bottom of the page, there is a footer with the text: "© 2013 General Electric Company. All Rights Reserved. TM indicates a trademark of the General Electric Company and/or its subsidiaries." and "BuyLog™ Catalog 1".

You will see the navigation bookmark list on the left and the Adobe Acrobat navigation at the top.

Success!